



This Datasheet applies for the following products:

200230 Battery Cell LTO 2,3V 24Ah PRO – M12

200239 Battery Cell LTO 2,3V 24Ah PRO – Weldable

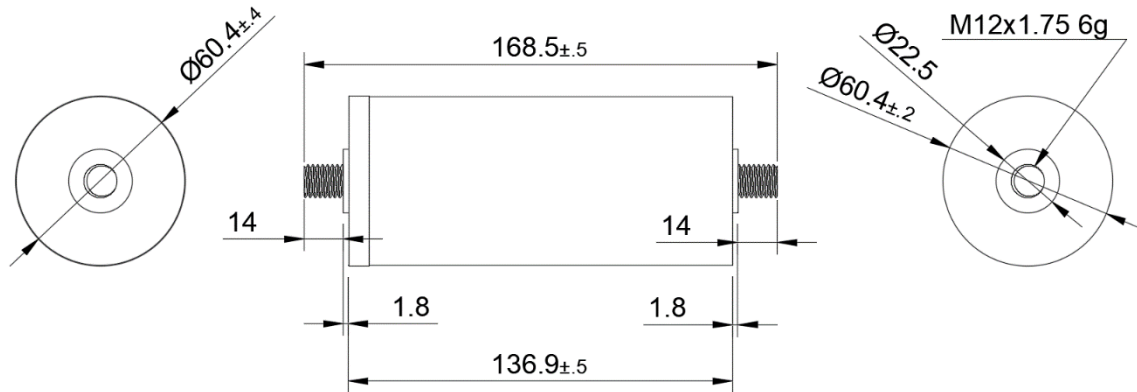
1. Specifications

| Property | Value |
|-----------------------------------|---|
| Weight | ≤ 850g |
| Nominal Capacity | 24Ah @ 1C (24A) |
| Nominal Voltage | 2.3V |
| Nominal Energy | 55.2Wh |
| Energy Density | 65 Wh/kg |
| Resistance | ≤0.5mΩ(AC, 1000Hz) |
| Cycle life(80% DOD) | ≥ 20.000 cycles |
| Charging cut-off voltage | 2.7V |
| Discharging cut-off voltage | 1.5V |
| Standard charging current | 1C(24A) |
| Standard discharging current | 1C(24A) |
| Max. constant charging current | 8C(192A) |
| Max. constant discharging current | 8C(192A) |
| Max. charging current | 20C(480A) |
| Max. discharging current | 30C(720A) |
| Temperature range for storage | Less than one year: -10~25°C Less than three months: -30~45°C |
| Temperature range for operation | Charging temperature: -40~60°C Discharging Temperature: -50~60°C |

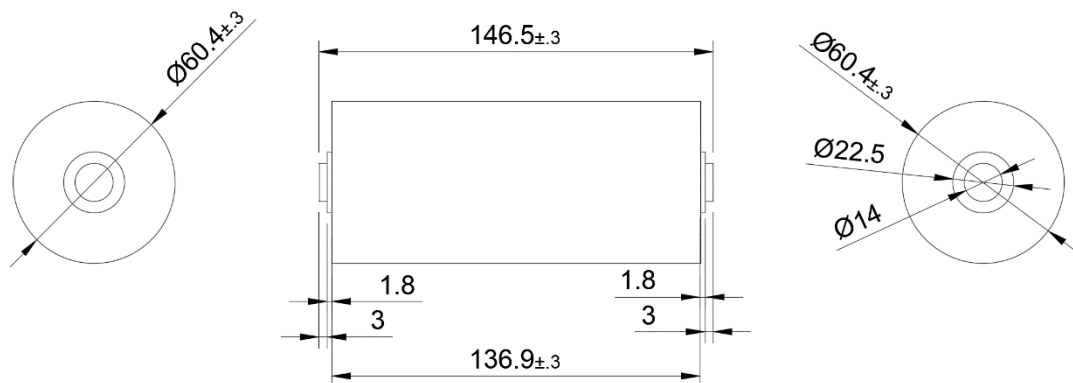


2. Dimensions

2.1. M12 connection



2.2. Weldable connection



| | | | | | | |
|---------|----|-------------|------------|--------------|------------|--------------|
| Index | 00 | Checked by: | AA | Released by: | JC | Page: 2 of 2 |
| Editor: | TA | Date: | 06.05.2024 | Date: | 07.05.2024 | |